

Technical data sheet

Product features



Cooling cabinet 700 l pastry version EN 40x60, stainless steel

Model	SAP Code	00012009
--------------	-----------------	----------



- GN / EN size in device: GN 2/1
- Chamber volume [l]: 458
- Minimum device temperature [°C]: -2
- Maximum device temperature [°C]: 7
- Insulation thickness [mm]: 90
- Control type: Digital
- Interior lighting: No
- Door lock: Yes
- Automatic defrost: Yes
- HACCP: Yes
- Annual energy consumption [kWh]: 332

SAP Code	00012009	Gross Volume [m3]	1.445
Net Width [mm]	733	Net Volume [m3]	1.298
Net Depth [mm]	847	Number of internal parts	20
Net Height [mm]	2090	Number of GN / EN	24
Net Weight [kg]	142.20	GN / EN size in device	GN 2/1
Power electric [kW]	0.130	Minimum device temperature [°C]	-2
Loading	230 V / 1N - 50 Hz	Maximum device temperature [°C]	7
Energy class	B	Refrigerant	R290
Chamber volume [l]	458	Climate class	5

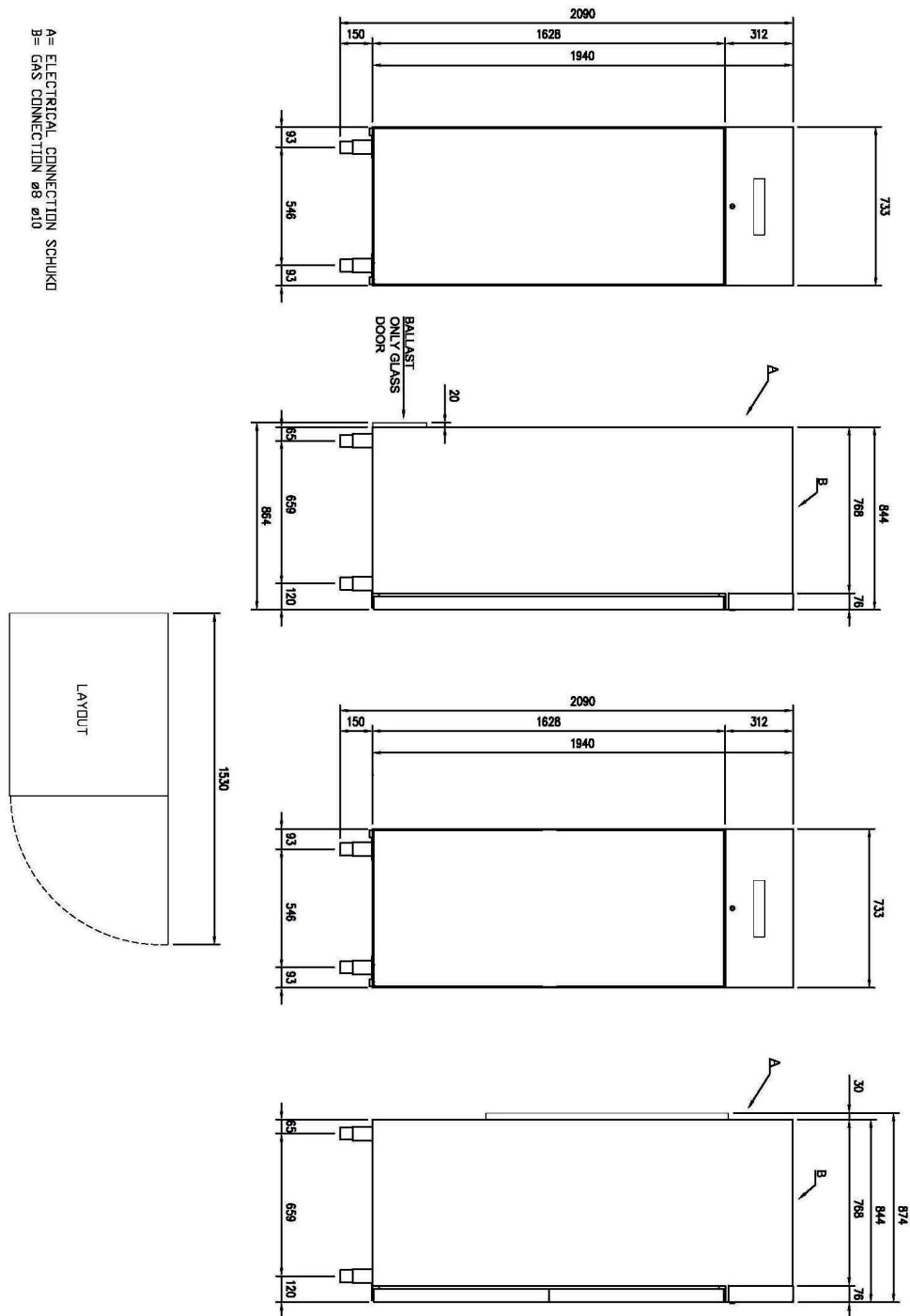
Technical data sheet

Technical drawing



Cooling cabinet 700 l pastry version EN 40x60, stainless steel

Model	SAP Code	00012009
--------------	-----------------	----------



Technical data sheet

Product benefits



Cooling cabinet 700 l pastry version EN 40x60, stainless steel

Model	SAP Code	00012009
--------------	-----------------	----------

- 1 Insulation 90mm**
minimal losses
 - energy saving
- 2 Two-sided opening**
location variability
 - greater operational efficiency
 - better kitchen ergonomics
- 3 All-stainless design**
corrosion resistance
 - longer service life
 - health safety
- 4 Automatic defrosting**
nothing needs to be watched
 - always working properly without extra operator requirements
- 5 Wheels, legs**
variability
 - user comfort
- 6 High energy class**
minimal energy loss
high efficiency
guaranteed chilled food
 - cost saving
 - hygienic safety

Technical data sheet

Technical parameters



Cooling cabinet 700 l pastry version EN 40x60, stainless steel

Model

SAP Code

00012009

1. SAP Code:

00012009

2. Net Width [mm]:

733

3. Net Depth [mm]:

847

4. Net Height [mm]:

2090

5. Net Weight [kg]:

142.20

6. Gross Width [mm]:

763

7. Gross depth [mm]:

873

8. Gross Height [mm]:

2170

9. Gross Weight [kg]:

157.20

10. Device type:

Electric unit

11. Power electric [kW]:

0.130

12. Loading:

230 V / 1N - 50 Hz

13. Energy class:

B

14. Refrigerant:

R290

15. Material:

AISI 304

16. Exterior color of the device:

Stainless steel

17. Max ambient temperature [°C]:

40

18. Device properties 2:

Bakery

19. GN / EN size in device:

GN 2/1

20. Number of internal parts:

20

21. Number of GN / EN:

24

22. Chamber volume [l]:

458

23. Gross Volume [m3]:

1.445

24. Net Volume [m3]:

1.298

25. Adjustable feet:

Yes

26. Insulation thickness [mm]:

90

27. Number of doors:

1

28. Unit:

Yes

Technical data sheet

Technical parameters



Cooling cabinet 700 l pastry version EN 40x60, stainless steel

Model

SAP Code

00012009

29. Control type:

Digital

34. Minimum device temperature [°C]:

-2

30. Door lock:

Yes

35. Maximum device temperature [°C]:

7

31. Interior lighting:

No

36. Automatic defrost:

Yes

32. HACCP:

Yes

37. Climate class:

5

33. Annual energy consumption [kWh]:

332

38. Cross-section of conductors CU [mm²]:

0,5

- Výkon (kW): 2,4-3,3 (230 V)